

## PERIOD HOMES

By Simon Miller



### Broad Street

, Sutton Valence ME17 3AJ

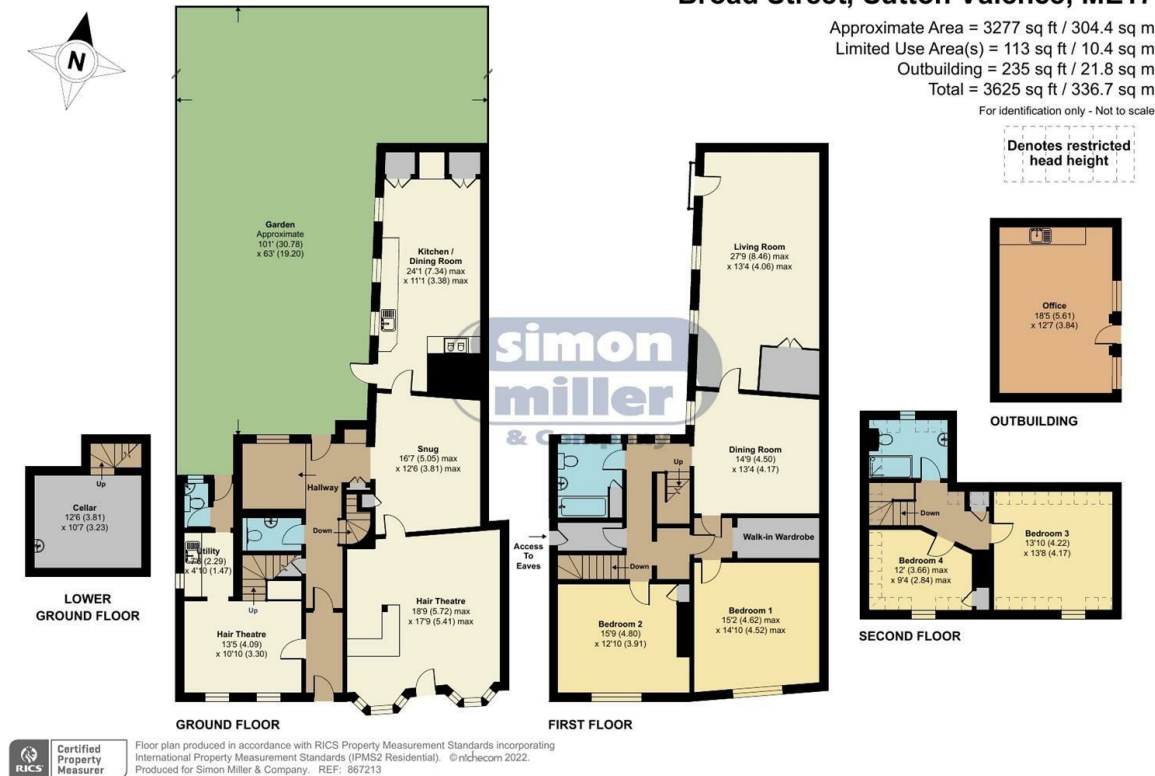
- Heart of the Village Location
- Substantial Living Accommodation
- Detached Studio / Garden Office
- Wealth of Original Features
- Offered Chain Free
- Grade II Listed Home
- Set Out Over Three Floors plus Cellar
- Mature Tiered Rear Garden
- Excellent Local Schools

**£800,000 Freehold**





Local Authority Maidstone  
Borough Council  
Council Tax Band D  
EPC Rating



**Period Homes by Simon Miller Office**  
Weald, 5 High Street, Headcorn, Ashford,  
Kent, TN27 9NH

**Contact**  
01622 850888  
admin@periodhomesbysimonmiller.co.uk  
<https://simonmiller.co.uk/period-homes/>

Agents Note: Whilst every care has been taken to prepare these particulars, they are for guidance purposes only. All measurements are approximate and for general guidance purposes only and whilst every care has been taken to ensure accuracy, they should not be relied upon and potential buyers/tenants are advised to recheck the measurements.

